

# Bartram & Co

14, Manhattan House, 401 Witan Gate, Milton Keynes, MK9 2BQ

£1,200 Per Month -



1



1



1



B

Council Tax Band: B Service Charge: x Ground Rent: x







£1,200 Per Month

# 14, Manhattan House, 401 Witan Gate

Milton Keynes, MK9 2BQ

- A Modern One Bedroom Apartment
- With Spectacular City Views
- Council Tax Band: B
- Holding Payment: £276.00
- In A Sought After Central Location
- 0% Deposit Option Available
- EPC Energy Rating: B

We're delighted to offer this one-bedroom, first-floor apartment in a sought-after central location. Located in "The Hub", the property benefits from bars, restaurants, and shopping facilities right on its doorstep.

The property accommodates a lounge/dining room with city views leading to a modern fitted kitchen with integrated appliances, a double bedroom with a built-in wardrobe, and a bright 3pc bathroom suite with a shower over bath. There is secure underground parking with the property. A 0% deposit option is available on this rental.



**ENTRANCE HALL:**

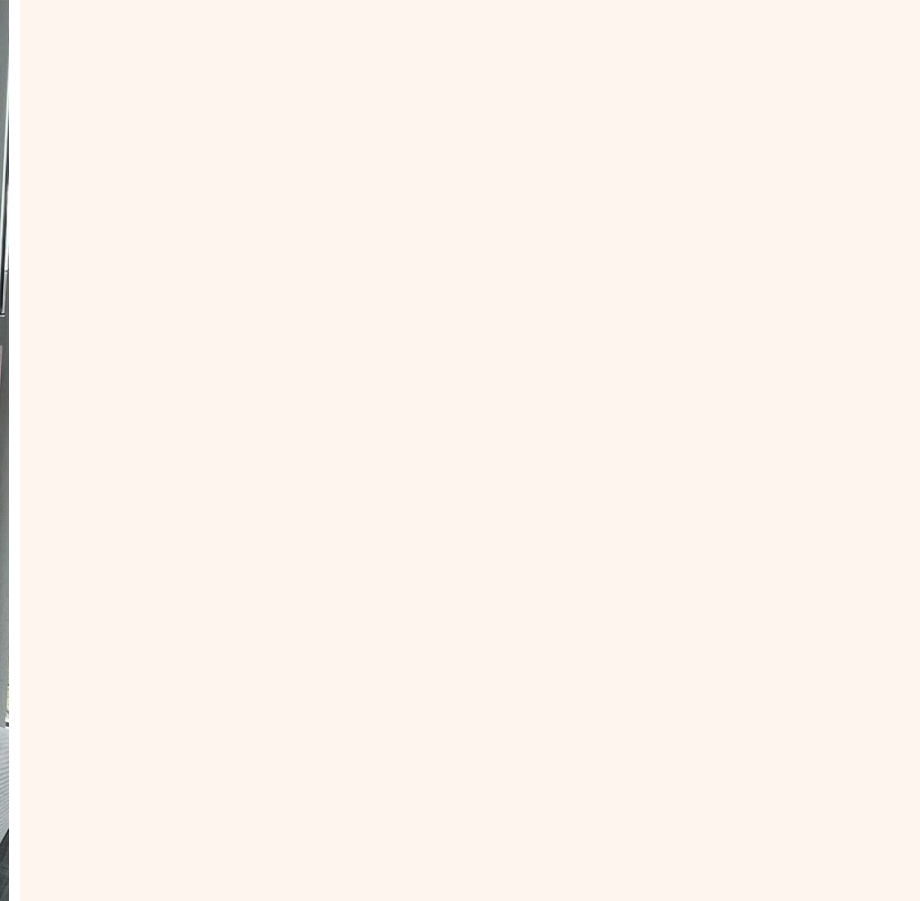
**LOUNGE/KITCHEN:**

**MASTER BEDROOM:**

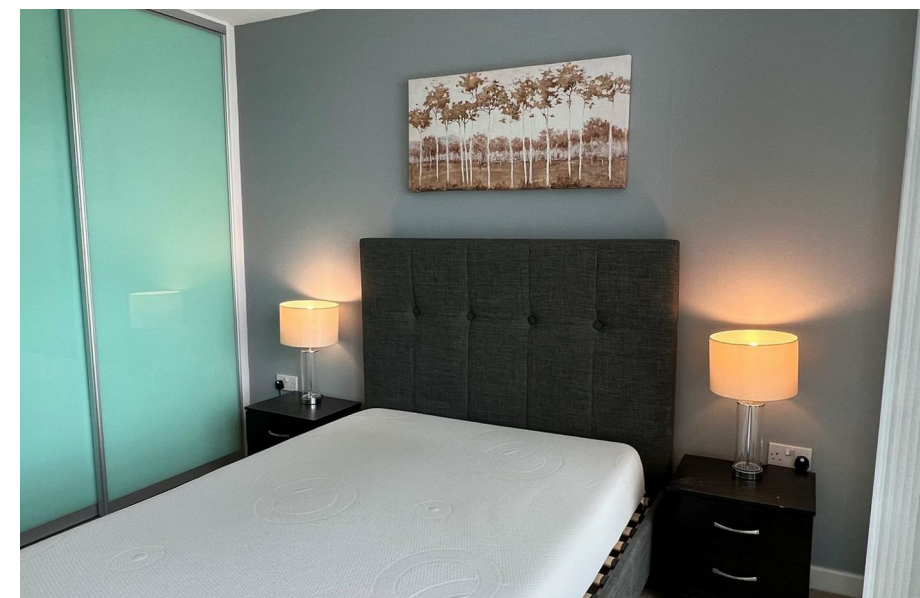
**BATHROOM:**

**TENANT FEES:**





Directions









Floor Plans



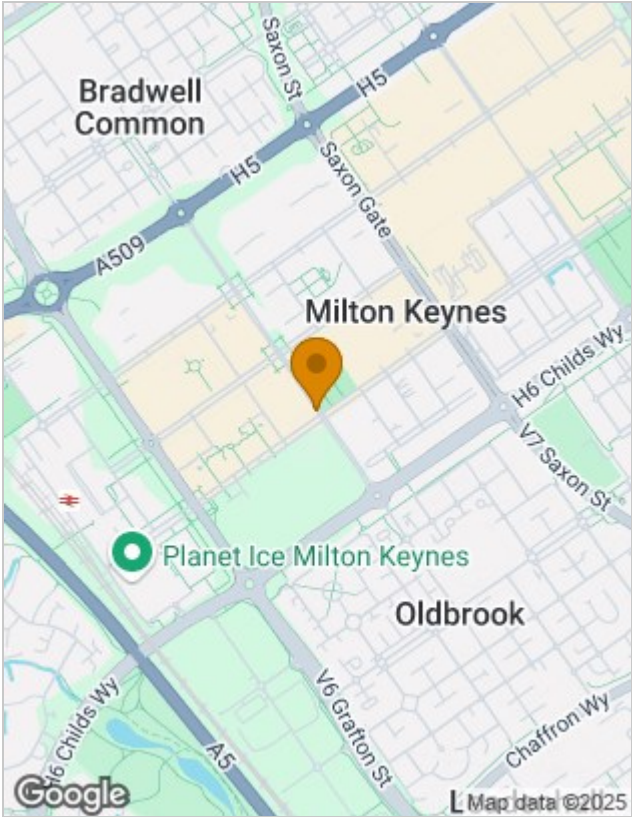
Viewing

Please contact our Towcester Lettings Office on 01327359164 if you wish to arrange a viewing appointment for this property or require further information.

The particulars are set out as a general outline only for the guidance of intended purchasers or lessees, and do not constitute, any part of a contract. Nothing in these particulars shall be deemed to be a statement that the property is in good structural condition or otherwise nor that any of the services, appliances, equipment or facilities are in good working order. Purchasers should satisfy themselves of this prior to purchasing.

Town Hall, 86 Watling Street East, Towcester, Northamptonshire, NN12 6BS  
Tel: 01327359164 Email: towcesterlettings@bartramandco.co.uk <https://www.bartramandco.co.uk>

Location Map



Energy Performance Graph

